

◀ HOME OF THE DAY

A Gentleman's Farm on 171 Acres in Wilmington

SPONSOR LISTING 18 Photos



\$3,150,000

Address

475 New Burlington Road
Wilmington, Ohio 45177

The main house is 475 New Burlington. With 5,895 square feet, it is the jewel of the property.

House number two is 449 New Burlington, a 2,610 square foot frame home.

House number three is a 1,635 square foot single level home.

The Story:

When the owners decided they were going to do everything here - live, play, work, - they set out to design an over-sized home office that could handle every need. A large picture window provides views of the orchard and pond. One of the most strikingly beautiful elements in the house is the open-arms stairway, constructed of solid oak with a patterned wood floor. The staircase features a small landing overlooking the atrium in back, and a larger landing at the front of the house with a walkout to a small balcony.

The attention to detail is evident everywhere, from the floors to the ceilings and the spaces in between. For instance, the floor consists of five different wood specimens, including durable African sapele as the featured floor. The high ceilings and gas fireplace make the room more like home.

A huge owner's suite occupies the first floor and four bedrooms and two full baths





PREV
2
NEXT

occupy the second floor. There is also a finished third floor with 350 square feet - perfect for a home theater or hobby room.

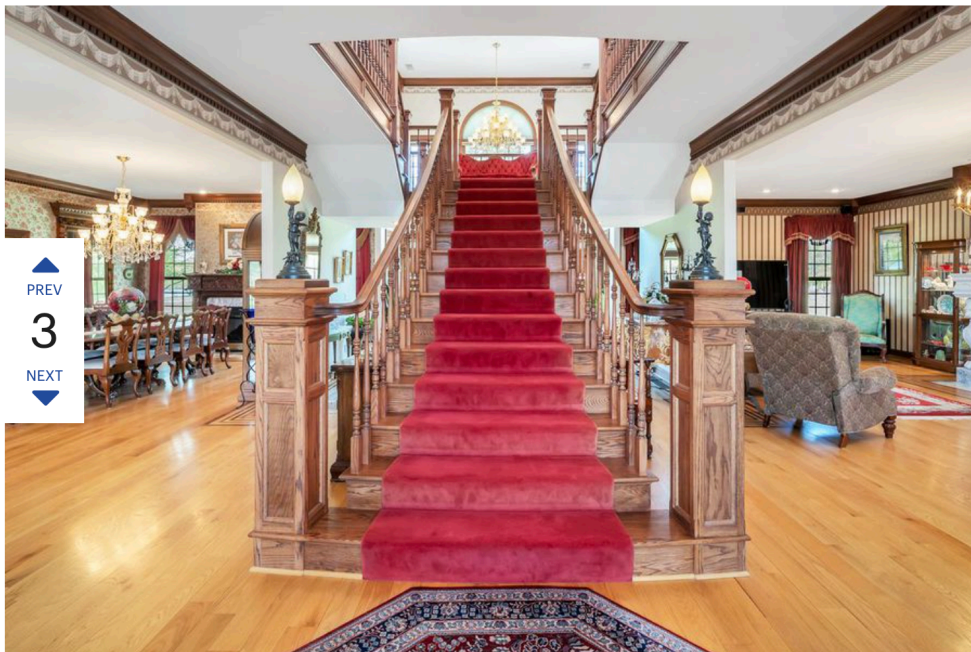
At the heart of the farm is a three acre stocked pond and the party barn- a favorite place for family gatherings. The owners contend that all outdoor activity seems to run through or wind up at this 1,680 square foot building with a wood burning fireplace.

Behind the party barn are two pole buildings; a 120 x 60 foot fully insulated metal barn with concrete floors and a french drain, two 12 foot garage doors, a bathroom, water hydrant, and security system - plus an equipment barn with five garage doors.

While not currently set up as a horse farm, the property could easily be a boarding facility. There is also a shooting range.

With woods, a creek, the pond, hiking and off-roading trails, this is a special place designed for the outdoors and sports.

Note: 60.8 acres are currently farmed and rented to neighboring farmers.



PREV
3
NEXT



[More about this Home >](#)



PERRIN MARCH
REALTOR

Phone
(513) 379-2253

Email
perrin.march@robinsonsir.com

Website
<http://www.perrinmarch.com/>



▲ PREV
4
▼ NEXT



DIANE MARCH

REALTOR

Phone
(513) 379-2254

Email
diane.march@sothebysrealty.com

Website
<http://www.perrinmarch.com>



▲ PREV
5
▼ NEXT



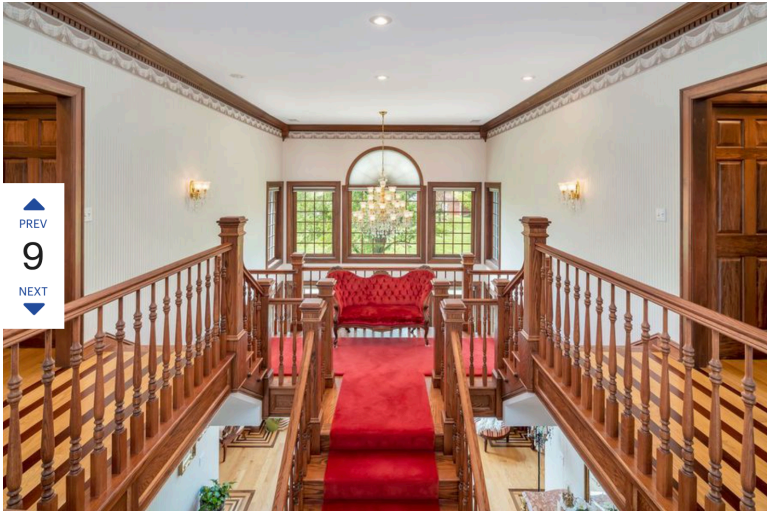
▲ PREV
6
▼ NEXT



▲ PREV
7
▼ NEXT



▲ PREV
8
▼ NEXT



PREV
9
NEXT



PREV
10
NEXT

Four bedroom home with first floor master.



PREV
11
NEXT



PREV
12
NEXT

This ranch style home has three bedrooms.



PREV
13
NEXT



PREV
14
NEXT

Party Barn



▲
PREV
15
NEXT
▼

Party barn with walkway to pond.



▲
PREV
16
NEXT
▼



▲
PREV
17
NEXT
▼

Shooting station



▲
PREV
18
NEXT
▼